



Integral Systems™

Corporate Profile

Contact Us

+923055659000

www.integralsystems.co

information@integralsystems.co

Table of contents

CEO's Message	01
About Us	02
Vision & Mission	03
Our Values	04
Smart Solutions		
AI Surveillance Solutions	05
Smart Home Solutions	06-07
IoT Solutions		
IoT Solutions	08
Smart Street Lighting	09
Smart Waste Management	10
Smart Parking Guidance	11
Cabling Solutions		
Structured Cabling Solutions	12
Corporate Solutions		
IT & Telecom Consultancy	13
Intra-Corporate Solutions	14-15

CEO's Message



Dear Customers and our Valued Partners,

At Integral Systems, we are driven by a singular vision: to deliver innovative AI and IoT-powered solutions that empower businesses and individuals to thrive in a smarter, safer, and more efficient world.

Our mission is to enhance operational productivity, optimize energy consumption, and elevate security frameworks. Whether in residential or commercial spaces, we harness the power of technology to provide tailored solutions that meet the unique needs of our clients. With advanced AI analytics on CCTV footage and intuitive dashboards, we equip decision-makers with actionable insights to navigate challenges and seize opportunities.

Partnering with industry leaders, we integrate smart technologies to redefine operational standards. Our IT and Telecom Consultancy division offers forward-thinking perspectives to implement AI and IoT innovations seamlessly. Leveraging our extensive experience in connectivity and messaging, we help businesses forge stronger connections with their customers.

As we move forward, I invite you to join us on this transformative journey. Together, we can shape a brighter, more sustainable future built on trust, innovation, and collaboration.

Your continued belief in Integral Systems fuels our passion to lead, inspire, and deliver meaningful change.

Warm regards,

Faisal Abbasi

CEO - **Integral** Systems

About Us

At Integral Systems, our core focus lies in crafting tailored solutions that harness the potential of AI (Artificial Intelligence) and IoT (Internet of Things). Our goal is to drive cost efficiencies, enhance operational productivity, and optimize energy consumption for our clientele.

We empower our customers by providing smart solutions in both residential and commercial spaces. Our specialized proficiency extends to improving security and surveillance frameworks, employing advanced AI-driven analytics on CCTV footage to ensure unmatched safety across various premises.

Through our consulting services, we collaborate closely with clients to understand their unique requirements and challenges. This enables us to design and implement bespoke strategies that maximize the value of AI and IoT technologies in achieving operational excellence.

Leveraging data, we deploy Business Intelligence insights through intuitive dashboards, equipping leaders and decision-makers with analytical overviews like never before. Working with leading organizations, Integral Systems pioneers AI and IoT-based solutions that redefine industry standards by seamlessly integrating smart technologies to improve organizational operations.

With our dedicated team, we also deliver Structured Cabling Solutions in buildings—enabling CCTV, high-speed Internet, IPTV, and Voice Services via telecom operators. Our comprehensive approach ensures that our clients receive end-to-end support, from consultation to implementation, positioning them for long-term success.

Vision & Mission



Vision

To lead in the AIoT (Artificial Intelligence of Things) space delivering smarter, safer and cost-effective solutions.

Mission

To empower customers to use the best AI and IoT management platforms for effective decision making via data driven intelligence.

Our Values



Future Focused

We bring to you the best and the latest technology in the AI and IoT field to enable digital solutions.

Complete transparency

We uphold the highest standards of integrity and honor the commitments we make.

Commitment to Positive change

We believe in solving issues and correctly positioning products which best suit the customer requirements.

Requirement and need based driven approach

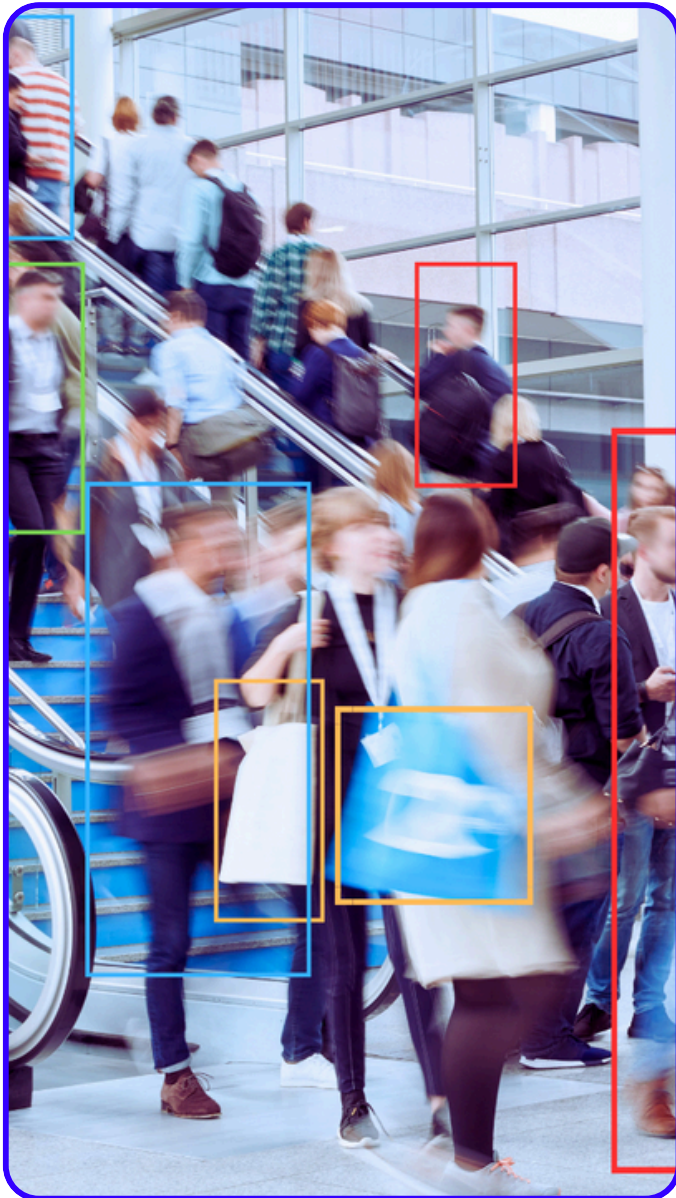
Our unique insights and knowledge makes our team engage with the customer as a trusted advisor.

One Team

As one team we are dedicated to work on resolving issues and enabling technology to deliver solutions.

AI-Surveillance Solutions

AI-Surveillance Partner 



AI-Surveillance Features include



TRASSIR
Neuro Detector



TRASSIR
Queue Detector



TRASSIR
Crowd Detector



TRASSIR
Neuro Counter



TRASSIR
Direction Detector



TRASSIR
Bag Counter



TRASSIR
Shelf Detector



TRASSIR
ActiveStock



AutoTRASSIR
(LPR)



TRASSIR
Workplace Detector



TRASSIR
ActivePOS



TRASSIR
Staff Tracker



TRASSIR
ActiveDome



TRASSIR
HeatMap on Map



TRASSIR
Wear Detector



TRASSIR
HardHat Detector

AI-Surveillance compatible with  **HIKVISION**  **BOSCH** 

Explore advanced '**Facial Recognition**' analytics with Microsoft Power BI



Smart Home Solutions

Smart Home Partner LifeSmart



Smart Home Products include

Smart Switches

Smart Lighting

Smart Interactions

Smart Curtains

Motion Sensors

Smart Thermostat

Smart Plugs

Smoke Sensor

Smart Door Lock

Enterprise Solutions include:

- Apartment Building Management
- Hotel Management
- Smart Office Management

Third Party Applications



Wireless Communication Protocols

5G

CoSS™

 matter

WiFi

ZIGBEE

Third Party Integrated Products

HIKVISION®

PHILIPS

*a*h_ua
TECHNOLOGY

hue

Smart Home Solutions

 Partner 



Smart Home Products include

Smart Lighting

Smart Switches

Smart Thermostat

Alarm System

Motion Sensors

Smart HVAC

Smart Plugs

Smart Door Lock

Enterprise Solutions include:

- Apartment Building Management
- Hotel Management
- Smart Office Management
- Villas

Third Party Applications



Communication Protocols

ZIGBEE   matter

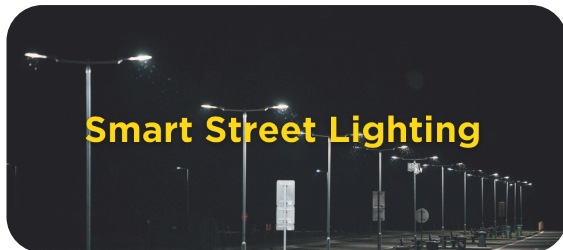




In the realm of IoT, Integral Systems serves as a comprehensive source for the provision of sensors, gateways, and both private and public application platforms. We have also secured a LPWAN IoT license, enabling us to deliver IoT solutions across various industries using legally approved frequency bands as per PTA's LPWAN license requirements.



Our IoT Solutions include





Smart Street Lighting

The Smart Street Light solution leverages cutting-edge LPWAN technology for automatic ON/OFF and dimming control, delivering a cost-effective, citywide solution

Benefits of Smart Street Lighting:

Energy Efficiency

Automatic ON/OFF and dimming control based on ambient light levels help minimize energy consumption and reduce operational costs.

Environmental Sustainability

By optimizing energy usage, Smart Street Lights contribute to environmental conservation and sustainability efforts.

Improved Safety and Visibility

Intelligent dimming ensures consistent and appropriate lighting levels, enhancing safety and visibility for pedestrians, cyclists, and drivers.

Remote Monitoring and Management

Cloud-based control enables remote monitoring, configuration, and maintenance of street lights, streamlining operational processes and reducing manual intervention.

Cost Savings

Efficient energy usage and reduced maintenance requirements translate into long-term cost savings for municipalities and organizations.





Smart Waste Management

Smart Waste Bin technology revolutionizes waste management practices by employing battery-operated sensors to detect the level of waste inside bins. Leveraging mmWave sensors for accurate measurement and LoRaWAN or NB-IoT connectivity, these sensors transmit data to Waste Management IoT platforms, enabling efficient waste collection and optimization of resources.

Benefits of Smart Waste Management

Easy Installation and Dismantling

Realtime Reporting Technology

Our Wastebin sensor is engineered for longevity, boasting an extended lifespan powered by a robust 38Ah battery. With this high-capacity battery, the sensor can operate reliably for an extended period of up to 3 Years

Supports **NB-IoT** OR **LoRaWAN**

Advanced Sensing Technology

Cost Savings: Efficient energy usage and reduced maintenance requirements translate into long-term cost savings for municipalities and organizations.





Smart Parking Guidance

The Battery-Operated Parking Management System utilizes advanced technologies such as NB-IoT or LPWAN (e.g., LoRaWAN) to detect the occupancy and vacancy of parking spaces both indoors and outdoors. This system employs battery-operated parking sensors placed in individual parking spaces to monitor their availability in real-time.

When a vehicle occupies or vacates a parking space, the sensors transmit data wirelessly to a centralized control system via NB-IoT or LPWAN communication networks. The control system processes this data and updates the parking status information, which can be accessed by drivers through various channels such as a mobile app or large display screens located at strategic points within the parking facility or nearby areas.

Benefits of Smart Parking Solutions

Low Power Consumption

Realtime Reporting Technology

Our parking sensor is equipped with both NB-IoT and LoRaWAN protocols. This dual-support ensures compatibility with a wide range of IoT networks, offering flexibility and scalability in deployment.

Advanced Sensing Technology

Cost Savings: Efficient fuel usage leads to conservation of fuel and lesser consumption

Saving Time: Parking users can allocate their time more effectively



Structured Cabling Solutions



Cabling Partners



We are dedicated to delivering state-of-the-art Optical Fiber Cable (OFC) network deployments within buildings, enabling CCTV, high-speed Internet, data services, and IPTV. Our comprehensive approach begins with detailed surveys and an in-depth understanding of OFC cables and equipment, ensuring tailored solutions that meet the specific requirements of each project. By meticulously planning and executing OFC installations, we lay the foundation for robust, high-performance connectivity infrastructures. Our team of experts is committed to precision and excellence, ensuring seamless integration and optimal performance of OFC networks. At Integral Systems, we are redefining connectivity standards, one building at a time.

Benefits of Structured Cabling

Scalability and Flexibility

Structured cabling systems are designed to support future expansions and upgrades with minimal disruption. They can easily accommodate new devices and technologies, making the network scalable and adaptable to growing demands.

Enhanced Performance and Reliability

By using high-quality cables and standardized installation practices, structured cabling ensures optimal performance and reliability. It minimizes downtime and reduces the risk of network failures, providing a stable and robust infrastructure for ISP products.

Simplified Management and Maintenance

Organized cabling systems are easier to manage and troubleshoot. Clear labeling and documentation allow for quick identification and resolution of issues, reducing maintenance time and costs.

Cost Efficiency

Although the initial investment in structured cabling may be higher, the long-term benefits include reduced operational costs and lower maintenance expenses. The ability to easily upgrade and expand the network also translates into cost savings over time.

Improved Aesthetics and Safety

Structured cabling systems are neatly organized, avoiding the clutter and hazards associated with disorganized cabling. This enhances the overall aesthetics of the workspace and reduces the risk of accidents.

IT & Telecom Consultancy



IT Infrastructure Optimization

Enhance your IT ecosystem with customized, efficient, and cost-effective solutions.



Telecommunications Strategy and Design

Deploy state-of-the-art communication frameworks for seamless connectivity and collaboration.



Cloud and Data Services

Build secure and scalable cloud solutions tailored to meet your business's unique needs.



IoT and Smart System Integration

Harness the power of IoT to create smarter, more connected environments for homes, businesses, and cities



Enterprise to Customer Messaging Solutions

Drive customer engagement and operational efficiency with advanced messaging platforms, including A2P SMS, WhatsApp Business, RCS, and CPaaS.

Intra-Corporate Solutions



Corporate Portal

A corporate portal for all business units and employees for a one window collaboration tool of the organization. It can be accessed by all active employees using their own email credentials.



Corporate Dashboards

A dashboard that provides a comprehensive view per business unit enabling data centric decisions.



Service Request

Employees can submit service requests to the relevant department to have their needs met in an organized and effective way.



Travel Requests and Transportation Expenses

Employees may submit Travel Requests for approval of business-related travel and Travel Expense Claims for reimbursement in a structured workflow.



Appraisal System

Utilized by employees for their annual performance evaluations. The system comprises multiple modules such as Objective Setting, Learning & Development Plan, Feedback Acquisition, Probation Assessment, Check-ins, Performance Improvement Plan, Talent Mapping, and Annual Appraisal.



Recruitment Portal

Use our AI-driven solution to automate AI screening, resume parsing, AI-based scoring, scheduling, and talent pool management.

Intra-Corporate Solutions



Leave Management System

Employees may request and apply for leaves following the organization's leave policy through the Leave Management System (LMS).



Trouble Ticket Management

Employees can submit Trouble Tickets should they encounter any issues or problems with their current services or equipment, or to submit a grievance.



Task Management

Utilized by Teams to efficiently and effectively manage their tasks



Business Intelligence Consulting

We consult teams on how to utilize the best of Microsoft Power BI.

Our Intra-corporate solutions utilize Microsoft **Sharepoint** and **Power BI**





 **Address**

#290, Aurangzeb Road, Sector E-7, Islamabad, Pakistan

 **Telephone**

+923055659000

 **Website**

www.integralsystems.co